

Luna SX

Central management console for rapid HSM setup and easy remote administration

Benefits

- Quick and Easy Remote HSM Management
 - Central Management of multiple HSMs
 - Reduced Cost of HSM Administration
 - Rapid HSM Deployment
 - Robust Security & Authentication
 - Comprehensive Audit Trail
 - Easy to Use GUI Interface

SafeNet Luna SX is a central management console for rapid setup and easy remote administration of SafeNet Hardware Security Modules (HSM). In contrast to traditional command line administration, the intuitive graphical user interface of Luna SX allows for quick and easy management, configuration, and compliance audit of HSM appliances.

Reduced Cost of HSM Administration

SafeNet Hardware Security Modules (HSMs) provide reliable protection for applications, transactions, and information assets by safeguarding the cryptographic keys that are at the heart of any encryption-based security solution. HSMs also provide robust security services such as signing, verifying, encrypting and decrypting of data objects for a variety of applications. Luna SX eliminates the complexities typically associated with the administration of HSM-based security. Luna SX provides a central, web-based management console for setup of access control rights, policy management options, as well as partition and client configuration for SafeNet Luna SA and Luna SP HSM, thereby dramatically reducing the cost of managing multiple HSM.

Intuitive GUI Interface

With its Graphic User Interface (GUI), Luna SX allows for easy management of multiple appliances, partitions, and clients requesting security services. Luna SX makes it quick and simple to add new HSM appliances to an application, either from scratch or as ready-configured devices already in deployment. Once configured via a serial link, new devices can be easily controlled over the network. Luna SX also provides an integrated Luna Shell command-line interface for advanced users to run complex operations on the HSMs.

Robust Security and Authentication

Luna SX supports public key authentication to authenticate to Luna HSM appliances and minimize the risk of unauthorized access. For added security, Luna SX enables two-factor public-key authentication for secure appliance access and file transfer using any Windows-ready smart card or USB token, including the SafeNet iKey.



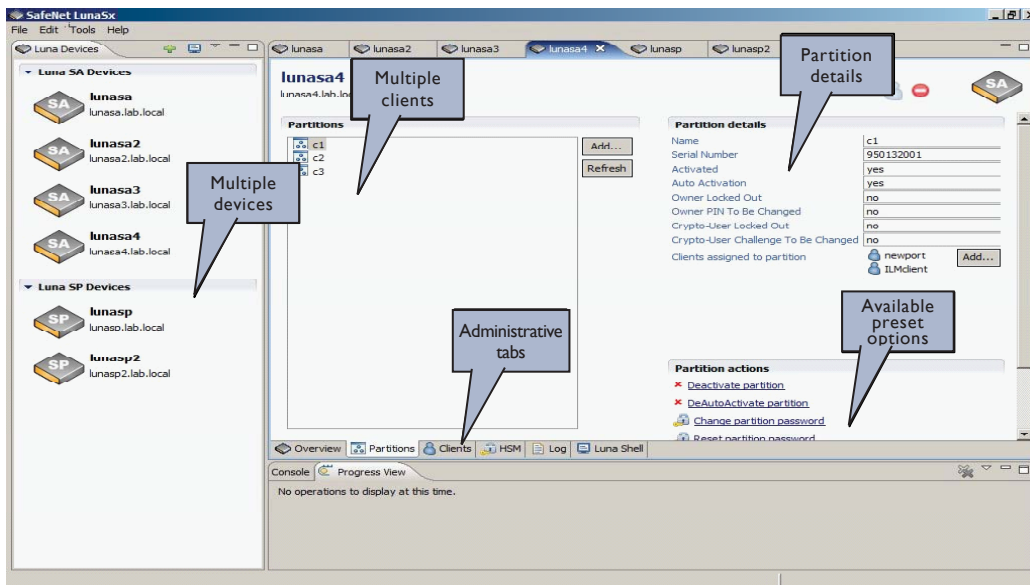
Comprehensive Audit Trail

Luna SX generates complete log files for each appliance, tracking access and any changes to the HSM. This audit trail capability provides companies with comprehensive data tracking and robust reporting capabilities for full compliance with government and industry mandates. For added ease of use, Luna SX dedicated file transfer application enables administrators to download log files as a scheduled task or as a one-off event.

About SafeNet, Inc.

SafeNet is a global leader in information security. Founded 25 years ago, the company provides complete security utilizing its encryption technologies to protect communications, intellectual property and digital identities, and offers a full spectrum of products including hardware, software, and chips. UBS, Nokia, Fujitsu, Hitachi, Bank of America, Adobe, Cisco Systems, Microsoft, Samsung, Texas Instruments, the U.S. Departments of Defense and Homeland Security, the U.S. Treasury and scores of other customers entrust their security needs to SafeNet. In 2007, SafeNet was taken private by Vector Capital. For more information, visit www.safenet-inc.com/HSM





Intuitive GUI makes HSM administration easy

Technical Specifications

Operating Systems

- Windows 2000, XP and Vista

Connectivity

- Serial Port
- Ethernet Network

Licensing

- Uses SafeNet Sentinel key

Enterprise Data Protection

SafeNet Luna SX is a key component of SafeNet's comprehensive enterprise data protection solution to reduce the cost and complexity of regulatory compliance, data privacy, and information risk management. SafeNet Enterprise Data Protection (EDP) is the only solution that secures data across the connected enterprise, from core to edge, with 360-degree protection of data at rest, data in transit, and data in use. Unlike disparate, multi-vendor point solutions that can create limited "islands" of security, SafeNet EDP provides an integrated security platform with centralized policy management and reporting for seamless, cost-efficient management of encrypted data across databases, applications, networks, and endpoint devices. For more information, visit www.safenet-inc.com/EDP



www.safenet-inc.com

Corporate Headquarters:

4690 Millennium Drive, Belcamp, Maryland 21017 USA
 Tel.: +1 410 931 7500 or 800 533 3958, Fax: +1 410 931 7524,
 Email: info@safenet-inc.com

EMEA Headquarters:

Tel.: + 44 (0) 1276 608 000, Email: info.emea@safenet-inc.com

APAC Headquarters:

Tel: +852 3157 7111, Email: info.apac@safenet-inc.com

For all office locations and contact information, please visit
www.safenet-inc.com/company/contact.asp

©2008 SafeNet, Inc. All rights reserved. SafeNet and SafeNet logo are registered trademarks of SafeNet. All other product names are trademarks of their respective owners.
 PB-LunaSX-12.15.08